



MONTHLY MEMBERSHIP PROGRESS REPORT

District 16 J

Results as of: 6/30/2015

GMT: OPEN

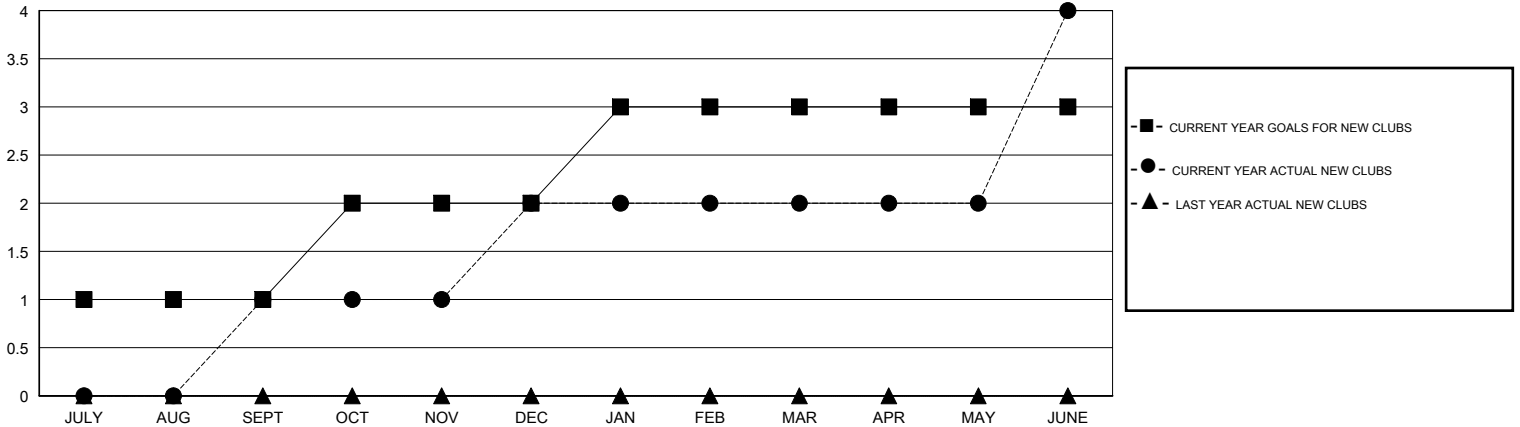
LOCATION NEW JERSEY

GMT CA 1

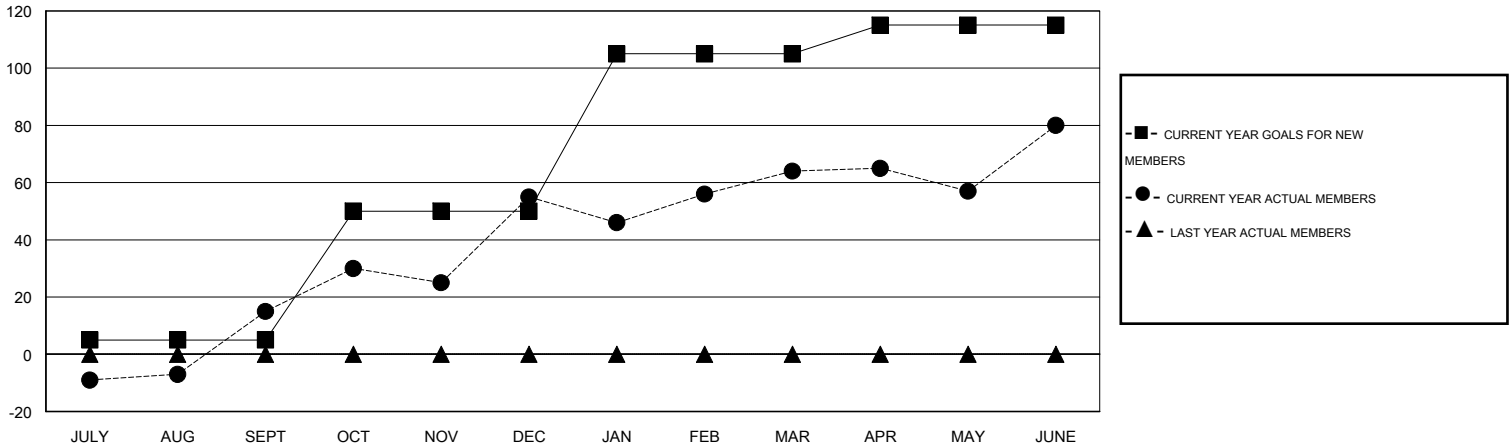
Clubs				
RESULTS FOR 2014-2015				
QUARTER	NEW CLUB GOAL	NEW CLUBS	DROPPED CLUBS	NET GAIN/LOSS
JULY/AUG/SEPT	1	1	0	1
OCT/NOV/DEC	1	1	0	1
JAN/FEB/MAR	1	0	0	0
APR/MAY/JUNE	0	2	1	1

Members				
RESULTS FOR 2014-2015				
QUARTER	NEW MEMBER GOAL	CHARTER AND NEW MEMBERS ADDED	DROPPED MEMBERS	NET GAIN/LOSS
JULY/AUG/SEPT	5	44	29	15
OCT/NOV/DEC	45	68	33	35
JAN/FEB/MAR	55	49	40	9
APR/MAY/JUNE	10	95	79	16

GOALS AND ACTUAL NEW CLUBS CUMULATIVE



GOALS AND ACTUAL MEMBERS CUMULATIVE



DROPPED CLUBS: 1

31 CLUBS OF 64 ADDED 1 OR MORE NEW MEMBERS

GENDER DISTRIBUTION	
MALE	1,035 (67.47%)
FEMALE	499 (32.53%)

DROPPED MEMBERS	
DECEASED	19
CLUB CANCELLED	6
OTHER	151
TOTAL	176

[CLICK HERE FOR HEALTH ASSESSMENT DATA](#)

FAMILY UNIT MEMBERS	244
HEAD OF HOUSEHOLD	117
NON-HEAD OF HOUSEHOLD	127